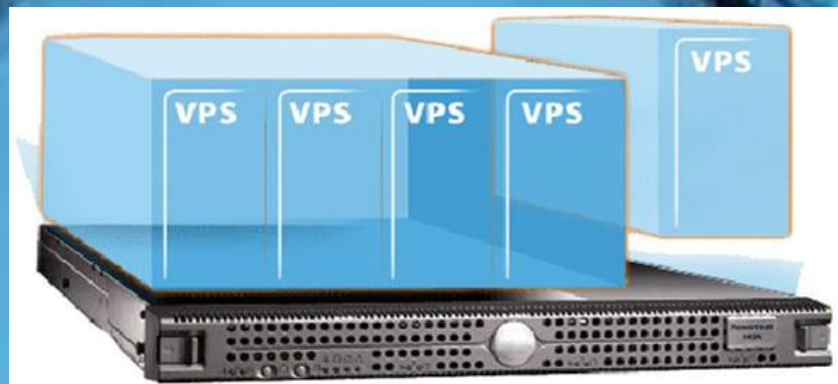


# Server

P. SuLaiMan

# Server



# Server



Ref: Inside  
Amazon's  
Massive  
Data Center

# Time Server

## NTP : Network time Protocol

### Disabling Chrony

```
systemctl stop chronyd
```

```
systemctl disable chronyd
```

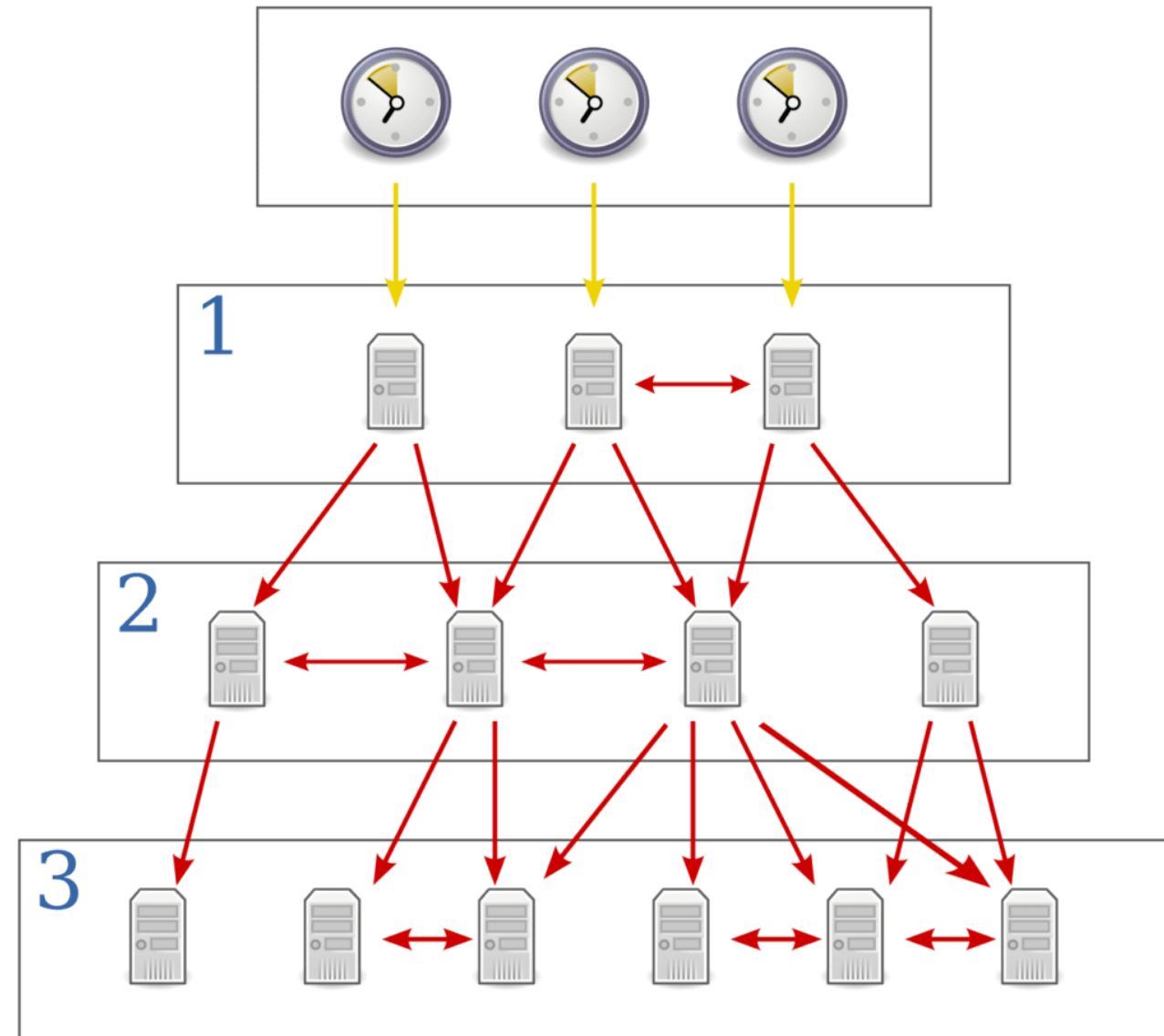
```
sudo systemctl status chronyd
```

### Installing ntpd

```
yum install -y ntp
```

### Configuring ntpd

```
vi /etc/ntp.conf
```



<https://www.liquidweb.com/kb/how-to-install-and-configuring-ntp-on-centos-and-ubuntu/>

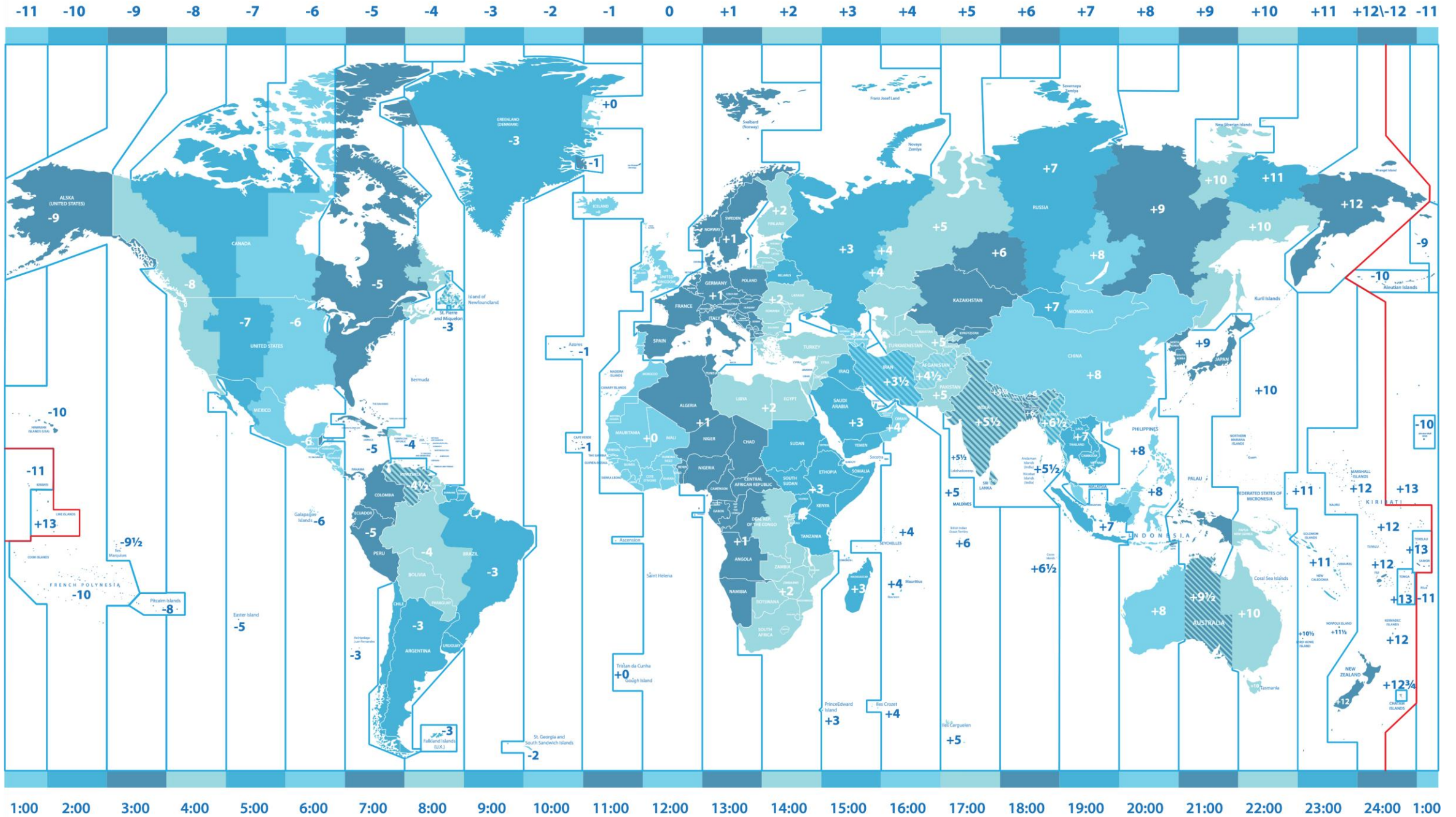
## NTP Server

time1.nimt.or.th

time2.nimt.or.th

time3.nimt.or.th

# WORLDWIDE MAP OF LOCAL TIME ZONES



## **set-timezone**

```
timedatectl
```

```
timedatectl list-timezones | grep Asia/Bangkok
```

```
timedatectl set-timezone Asia/Bangkok
```

## **Activating ntpd**

```
systemctl start ntpd
```

```
systemctl enable ntpd
```

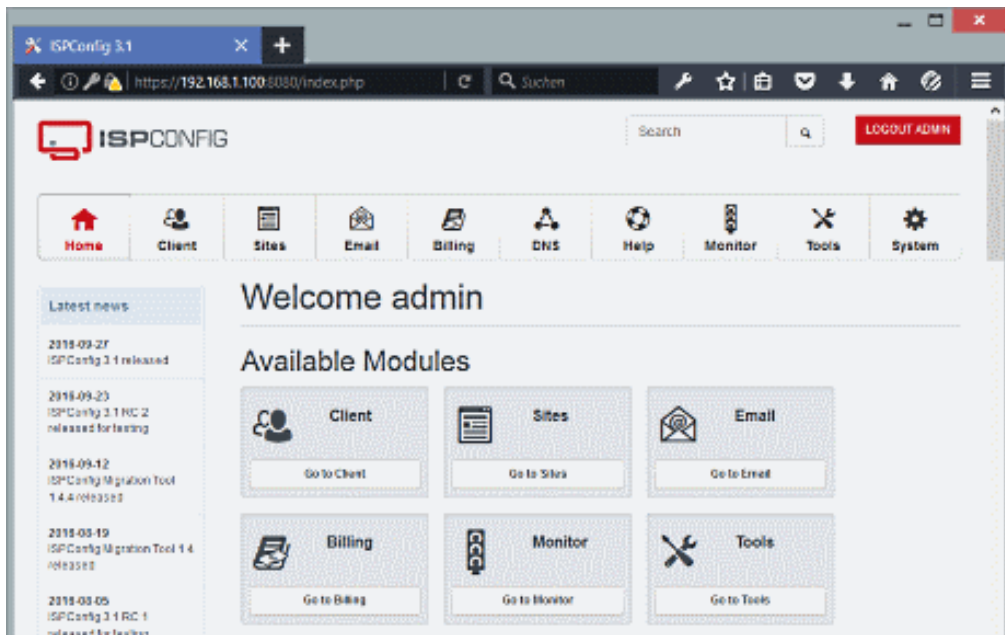
## **Manual Sync**

```
systemctl stop ntpd
```

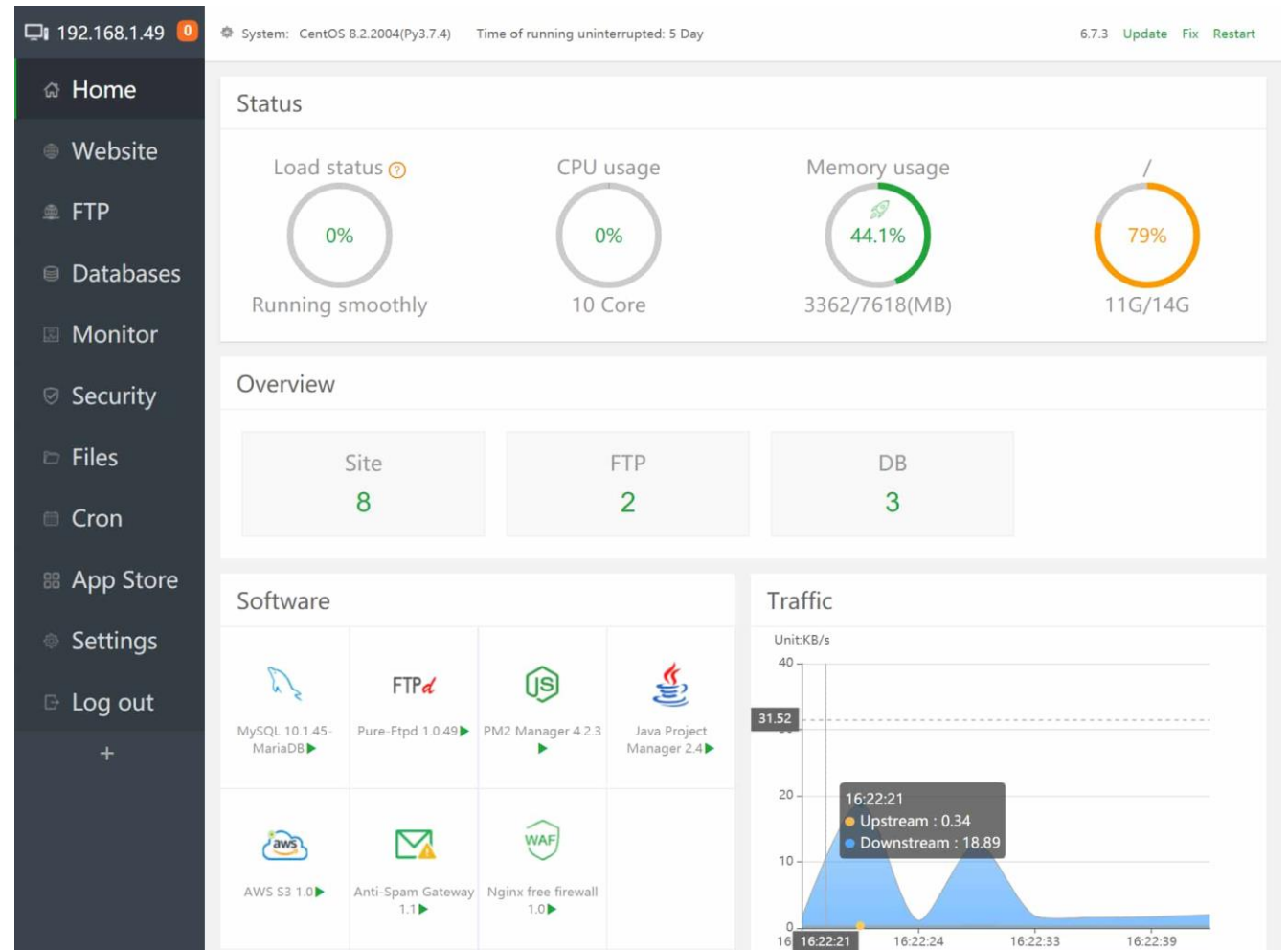
```
ntpdate -gq
```

```
systemctl start ntpd
```

# Web Server



<https://www.ispconfig.org/>



<https://www.apanel.com/>

# Lab.

<https://ubuntu.com/download/server>

ให้นักศึกษาทำการติดตั้ง **Ubuntu Server**  
ติดตั้ง **NTP**

กำหนดค่า **Timezone** เป็น **Asia/Bangkok** และ

กำหนดค่า **NTP Server** ตามสถาบันมาตรวิทยาแห่งชาติ