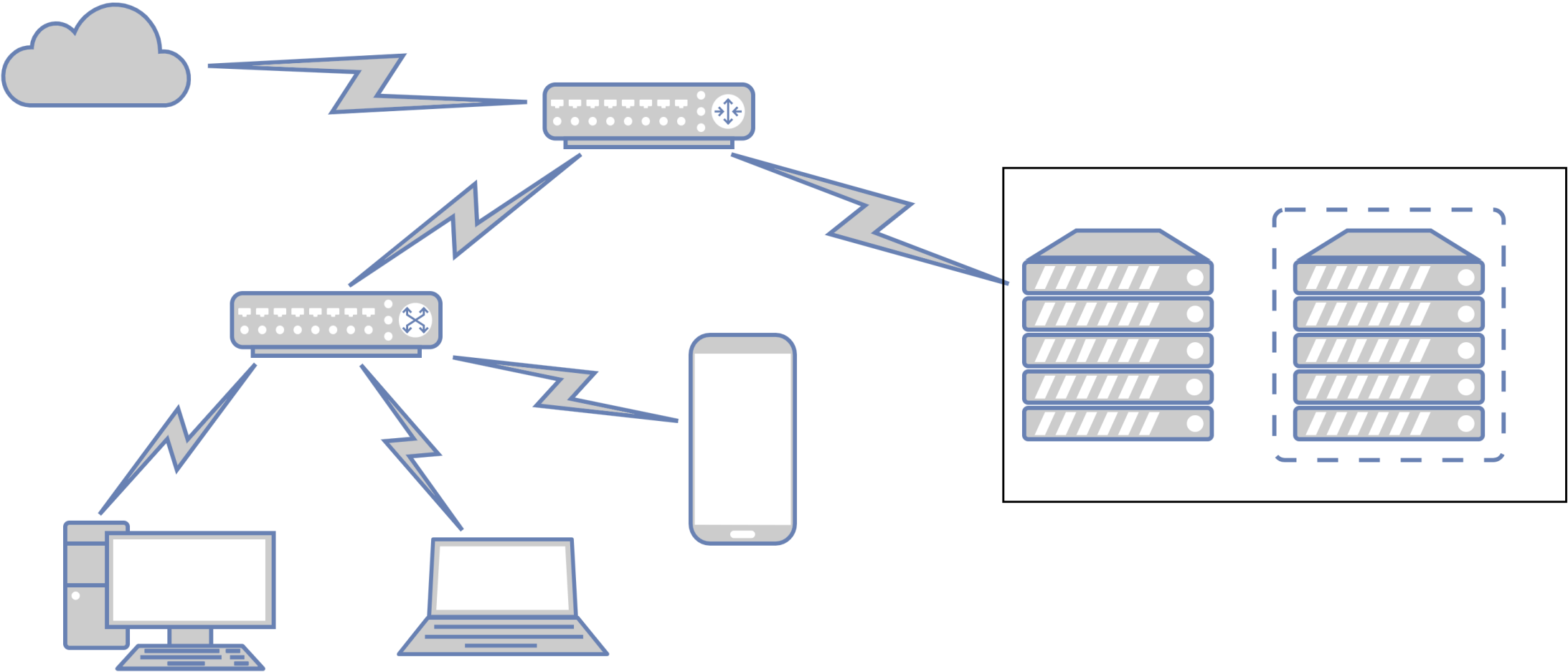
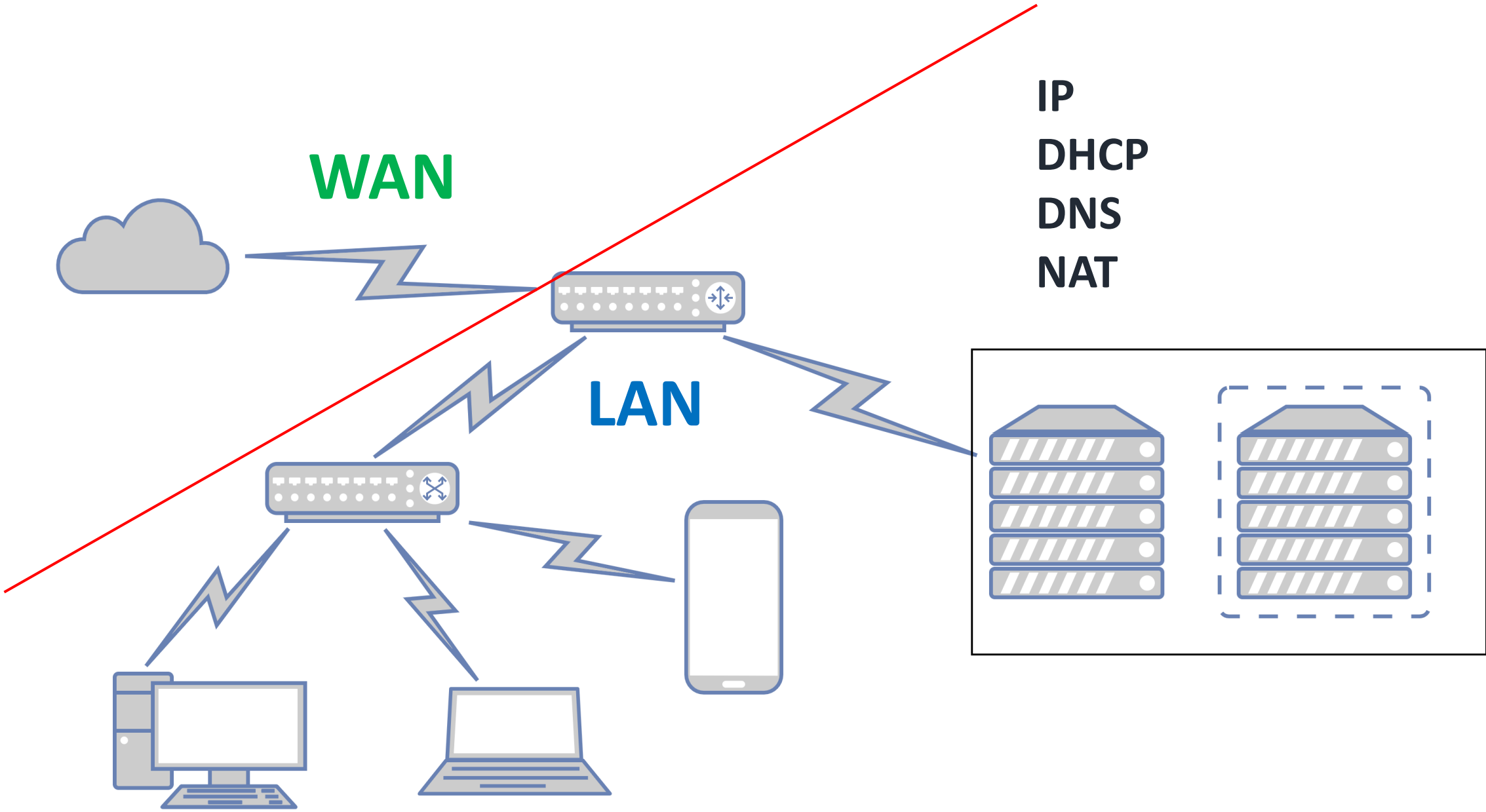


Internet

P. SuLaiMan





WAN

LAN

IP
DHCP
DNS
NAT

File Tools

Connect To: C4:AD:34:BC:6B:E5

Keep Password

Login: admin

Open In New Window

Password:

Auto Reconnect

Add/Set

Connect To RoMON

Connect



Managed Neighbors



Refresh



Find

all



MAC Address	IP Address	Identity	Version	Board	Uptime	
C4:AD:34:BC:6B:E5	10.10.10.1	MikroTik	7.1.2 (sta...)	RB450Gx4	00:48:47	

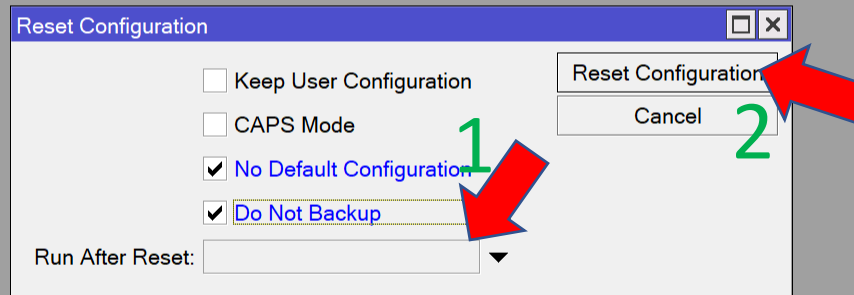
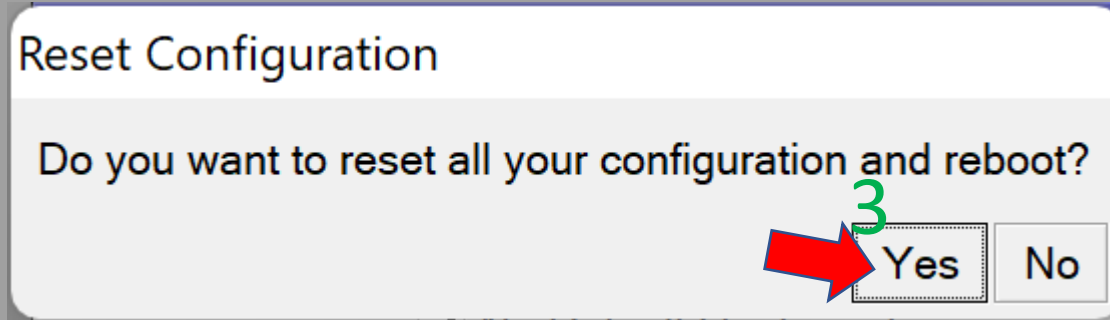
- Quick Set
- CAPsMAN
- Interfaces
- Wireless
- WireGuard
 - Auto Upgrade
- Bridge
 - Certificates
- PPP
 - Clock
- Switch
 - Console
- Mesh
 - Disks
- IP
 - Health
- MPLS
 - History
- IPv6
 - Identity
- Routing
 - LEDs
- System
 - License
- Queues
 - Logging
- Files
 - NTP Client
- Log
 - NTP Server
- RADIUS
 - Note
- Tools
 - Packages
- New Terminal
 - Password
- Dot1X
 - Ports
- Partition
 - Reboot
- Make Supout.rif
 - Reset Configuration
- New WinBox
 - Resources
- Exit
 - RouterBOARD
 - Scheduler
 - Scripts
 - Shutdown
 - Special Login
 - Users
 - Watchdog

Reset config



Reset config

- Quick Set
- CAPsMAN
- Interfaces
- Wireless
- WireGuard
- Bridge
- PPP
- Switch
- Mesh
- IP
- MPLS
- IPv6
- Routing
- System
- Queues
- Files
- Log
- RADIUS
- Tools
- New Terminal
- Dot1X
- Partition
- Make Supout.rif
- New WinBox
- Exit
- Windows



File Tools

Connect To: C4:AD:34:BC:6B:E5

 Keep Password

Login: admin

 Open In New Window

Password:

 Auto Reconnect

Add/Set

Connect To RoMON

Connect

Managed Neighbors



Refresh

Find

all



MAC Address	IP Address	Identity	Version	Board	Uptime	
C4:AD:34:BC:6B:E5	0.0.0.0	MikroTik	7.1.2 (sta...	RB450Gx4	00:15:06	

1 item

- Quick Set
- CAPsMAN
- Interfaces
- Wireless
- WireGuard
- Bridge
- PPP
- Switch
- Mesh
- IP
- MPLS
- IPv6
- Routing
- System
- Queues
- Files
- Log
- RADIUS
- Tools
- New Terminal
- Dot1X
- Partition
- Make Supout.tif
- New WinBox
- Exit
- Windows

Change Password Now [Close]

Your password has expired, please change it!

Old Password:

New Password:

Quick Set	
CAPsMAN	
Interfaces	
Wireless	
WireGuard	
Bridge	ARP
PPP	Addresses
Switch	Cloud
Mesh	DHCP Client
IP	DHCP Relay
MPLS	DHCP Server
IPv6	DNS
Routing	Firewall
System	Hotspot
Queues	IPsec
Files	Kid Control
Log	Neighbors
RADIUS	Packing
Tools	Pool
New Terminal	Routes
Dot1X	SMB
Partition	SNMP
Make Supout.tif	SSH
New WinBox	Services
Exit	Settings
	Socks
	TFTP
	Traffic Flow
	UPnP
	VRF
	Web Proxy

- Quick Set
- CAPsMAN
- Interfaces
- Wireless
- WireGuard
- Bridge
- PPP
- Switch
- Mesh
- IP
- MPLS
- IPv6
- Routing
- System
- Queues
- Files
- Log
- RADIUS
- Tools
- New Terminal
- Dot1X
- Partition
- Make Supout.rif
- New WinBox
- Exit
- Windows

DHCP Client

DHCP Client DHCP Client Options

+ - ✓ ✕ [icon] [icon] Release Renew Find

Interface	Use P...	Add D...	IP Address	Expires After	Status
-----------	----------	----------	------------	---------------	--------

0 items

- Quick Set
- CAPsMAN
- Interfaces
- Wireless
- WireGuard
- Bridge
- PPP
- Switch
- Mesh
- IP
- MPLS
- IPv6
- Routing
- System
- Queues
- Files
- Log
- RADIUS
- Tools
- New Terminal
- Dot1X
- Partition
- Make Supout.rif
- New WinBox
- Exit
- Windows

DHCP Client

DHCP Client Options

New DHCP Client

DHCP Advanced Status

Interface: ether1

Use Peer DNS

Use Peer NTP

Add Default Route: yes

OK

Cancel

Apply

Disable

Comment

Copy

Remove

Release

Renew

enabled Status: stopped

0 items

- Quick Set
- CAPsMAN
- Interfaces
- Wireless
- WireGuard
- Bridge
- PPP
- Switch
- Mesh
- IP
- MPLS
- IPv6
- Routing
- System
- Queues
- Files
- Log
- RADIUS
- Tools
- New Terminal
- Dot1X
- Partition
- Make Supout.rif
- New WinBox
- Exit
- Windows

DHCP Client

DHCP Client DHCP Client Options

+ - ✓ ✕ [icon] [icon] Release Renew Find

Interface	Use P...	Add D...	IP Address	Expires After	Status
ether1	yes	yes	10.70.40.145/...	21:58:56	bound

1 item

- Quick Set
- CAPsMAN
- Interfaces
- Wireless
- WireGuard
- Bridge
- PPP
- Switch
- Mesh
- IP
- MPLS
- IPv6
- Routing
- System
- Queues
- Files
- Log
- RADIUS
- Tools
- New Terminal
- Dot1X
- Partition
- Make Supout.rif
- New WinBox
- Exit
- Windows

Address List

Address	Network	Interface
10.0.0.1/24	10.0.0.0	ether5
10.70.40.145/24	10.70.40.0	ether1

DHCP Client

DHCP Client

Interface ether1

2 items

enabled

1 item

Address <10.0.0.1/24>

Address: 10.0.0.1/24

Network: 10.0.0.0

Interface: ether5

OK

Cancel

Apply

Disable

Comment

Copy

Remove

- Quick Set
- CAPsMAN
- Interfaces
- Wireless
- WireGuard
- Bridge
- PPP
- Switch
- Mesh
- IP
- MPLS
- IPv6
- Routing
- System
- Queues
- Files
- Log
- RADIUS
- Tools
- New Terminal
- Dot1X
- Partition
- Make Supout.rif
- New WinBox
- Exit

- Windows

Address	Network	Interface
10.0.0.1/24	10.0.0.0	ether5

DHCP Server

DHCP Networks Leases Options Option Sets Vendor Classes Alerts

DHCP Config DHCP Setup

Name	Interface	Relay	Lease Time	Address Pool	Add AR...
0 items					

DHCP Setup

Select interface to run DHCP server on

DHCP Server Interface: ether1

- ether1
- ether2
- ether3
- ether4
- ether5

- Quick Set
- CAPsMAN
- Interfaces
- Wireless
- WireGuard
- Bridge
- PPP
- Switch
- Mesh
- IP
- MPLS
- IPv6
- Routing
- System
- Queues
- Files
- Log
- RADIUS
- Tools
- New Terminal
- Dot1X
- Partition
- Make Supout.rif
- New WinBox
- Exit

- Windows

Address List

Address	Network	Interface
10.0.0.1/24	10.0.0.0	ether5

DHCP Server

DHCP Networks Leases Options Option Sets Vendor Classes Alerts

DHCP Config DHCP Setup

Name	Interface	Relay	Lease Time	Address Pool	Add AR...
0 items					

DHCP Setup

Select network for DHCP addresses

DHCP Address Space: 10.0.0.0/24

Back Next Cancel

- Quick Set
- CAPsMAN
- Interfaces
- Wireless
- WireGuard
- Bridge
- PPP
- Switch
- Mesh
- IP
- MPLS
- IPv6
- Routing
- System
- Queues
- Files
- Log
- RADIUS
- Tools
- New Terminal
- Dot1X
- Partition
- Make Supout.tif
- New WinBox
- Exit
- Windows

DHCP Server

DHCP Networks Leases Options Option Sets Vendor Classes Alerts

+ - ✓ ✕ [DHCP Config] [DHCP Setup] Find

Name	Interface	Relay	Lease Time	Address Pool	Add AR...
0 items					

DHCP Setup

Select gateway for given network

Gateway for DHCP Network:

Back Next Cancel

- Quick Set
- CAPsMAN
- Interfaces
- Wireless
- WireGuard
- Bridge
- PPP
- Switch
- Mesh
- IP
- MPLS
- IPv6
- Routing
- System
- Queues
- Files
- Log
- RADIUS
- Tools
- New Terminal
- Dot1X
- Partition
- Make Supout.tif
- New WinBox
- Exit
- Windows

DHCP Server

DHCP Networks Leases Options Option Sets Vendor Classes Alerts

+ - ✓ ✕ [DHCP Config] [DHCP Setup] Find

Name	Interface	Relay	Lease Time	Address Pool	Add AR...
0 items					

DHCP Setup

Select pool of ip addresses given out by DHCP server

Addresses to Give Out: 10.0.0.2-10.0.0.254

Back Next Cancel

- Quick Set
- CAPsMAN
- Interfaces
- Wireless
- WireGuard
- Bridge
- PPP
- Switch
- Mesh
- IP
- MPLS
- IPv6
- Routing
- System
- Queues
- Files
- Log
- RADIUS
- Tools
- New Terminal
- Dot1X
- Partition
- Make Supout.tif
- New WinBox
- Exit
- Windows

DHCP Server

DHCP Networks Leases Options Option Sets Vendor Classes Alerts

⊕ ⊖ ✓ ✕ 📄 🔍 DHCP Config DHCP Setup Find

Name	Interface	Relay	Lease Time	Address Pool	Add AR...
0 items					

DHCP Setup

Select DNS servers

DNS Servers: 10.10.2.5

10.10.2.6

Back Next Cancel

- Quick Set
- CAPsMAN
- Interfaces
- Wireless
- WireGuard
- Bridge
- PPP
- Switch
- Mesh
- IP
- MPLS
- IPv6
- Routing
- System
- Queues
- Files
- Log
- RADIUS
- Tools
- New Terminal
- Dot1X
- Partition
- Make Supout.tif
- New WinBox
- Exit
- Windows

DHCP Server

DHCP Networks Leases Options Option Sets Vendor Classes Alerts

+ - ✓ ✕ [Print] [Filter] DHCP Config DHCP Setup Find

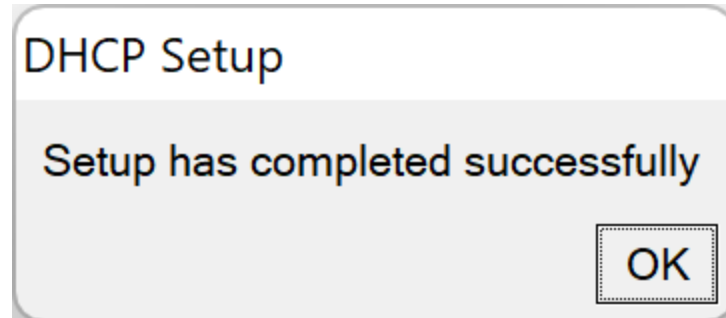
Name	Interface	Relay	Lease Time	Address Pool	Add AR...
0 items					

DHCP Setup

Select lease time

Lease Time:

Back Next Cancel



- Quick Set
- CAPsMAN
- Interfaces
- Wireless
- WireGuard
- Bridge
- PPP
- Switch
- Mesh
- IP
- MPLS
- IPv6
- Routing
- System
- Queues
- Files
- Log
- RADIUS
- Tools
- New Terminal
- Dot1X
- Partition
- Make Supout.rif
- New WinBox
- Exit
- Windows

DNS Settings

Servers:	10.0.0.1	OK
Dynamic Servers:	10.10.2.5	Cancel
	10.10.2.6	Apply
Use DoH Server:		Static
	<input type="checkbox"/> Verify DoH Certificate	Cache
	<input type="checkbox"/> Allow Remote Requests	
Max UDP Packet Size:	4096	
Query Server Timeout:	2.000 s	
Query Total Timeout:	10.000 s	
Max. Concurrent Queries:	100	
Max. Concurrent TCP Sessions:	20	
Cache Size:	2048 KiB	
Cache Max TTL:	7d 00:00:00	
Cache Used:	27 KiB	

- Quick Set
- CAPsMAN
- Interfaces
- Wireless
- WireGuard
- Bridge
- PPP
- Switch
- Mesh
- IP
- MPLS
- IPv6
- Routing
- System
- Queues
- Files
- Log
- RADIUS
- Tools
- New Terminal
- Dot1X
- Partition
- Make Supout.tif
- New WinBox
- Exit
- Windows

DHCP Server

DHCP Networks Leases Options Option Sets Vendor Classes Alerts

+ - ✓ ✗ [icon] [icon] Check Status Find

	Address	MAC Address	Client ID	Server	Active Address	Active MAC Addr...	Active Hos...	Bridge Port	Expires After	Status
D	10.0.0.254	3C:18:A0:1A:86:98	1:3c:18:a0:1a:86:98	dhcp1	10.0.0.254	3C:18:A0:1A:86:98	NaiWang		23:52:17	bound

1 item